

[Back to Index](#)



With boundless options, CityCenter will transform urban living on a global scale.

# A CITY IN THE MAKING

story by Patricia Kirk

Flying into Las Vegas, one may notice the skyline has begun to grow and change. CityCenter's 18 million square feet of futuristic concrete, steel and glass structures are easily spotted rising above the glitz of neon lights, casinos and resort hotels.

When completed in November 2009, this more-than-\$8-billion, 76-acre joint venture between MGM MIRAGE and Dubai World will be one of the great urban communities of this century, attracting visitors from around the world, as well as providing those who will call The Strip home a sense of place and permanence.

Overall, CityCenter is currently the largest privately funded development in the United States. It is comprised of a resort casino, boutique hotels, residential offerings and a retail and entertainment district.

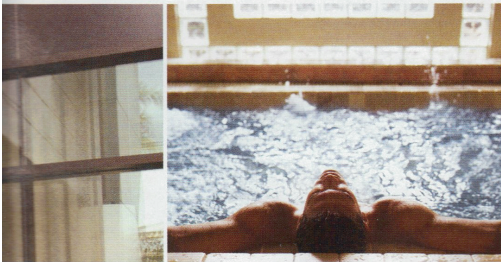
Designed by a dream team of international architects, CityCenter will set a new standard for design and sustainability. The development is targeting a Silver Leadership in Energy and Environmental Design (LEED) rating from the U.S. Green Building Council, which if achieved will make it the largest project in the nation to earn such certification.

"CityCenter is a mixed architectural environment in terms of the look and feel of the buildings, but in the end it will appear as if it was painted with the same brush — when it was actually several artists who contributed to the design," said Bobby Baldwin, Chief Design and Construction Officer/President and CEO of CityCenter.

He attributes the successful aesthetic integration of CityCenter's six architecturally diverse components to the quality of talent assembled for the project. Baldwin contends that involving multiple experts created a process where the end result will be something entirely new and different.

The Crystals, designed by Studio Daniel Libeskind, consulting to AAI Architects, Inc., will provide an urban core for the development. Featuring a brilliant crystalline canopy, The Crystals will offer more than 500,000 square feet of shops showcasing luxury brands and couture from around the world, exceptional restaurants and an eclectic mix of vibrant entertainment.

page:  
g of  
er's  
ity.



"CITYCENTER IS A MIXED ARCHITECTURAL ENVIRONMENT IN TERMS OF THE LOOK AND FEEL OF THE BUILDINGS, BUT IN THE END IT WILL APPEAR AS IF IT WAS PAINTED WITH THE SAME BRUSH — WHEN IT WAS ACTUALLY SEVERAL ARTISTS WHO CONTRIBUTED TO THE DESIGN."

The 47-story Harmon Hotel, Spa & Residences, designed by London-based Foster + Partners, will feature a modern reflective glass exterior that transitions to a casual but sophisticated interior designed for the affluent resident with an appreciation of privacy and a desire to access the best. The project connects to The Crystals and will include a conference facility, a spa and salon with Strip views, as well as residences situated on the upper floors.

Veer Towers, designed by architect Helmut Jahn, will resonate with energy as its two 37-story structures lean in opposite directions at a five-degree angle. Appealing to people on the go, Veer will offer close proximity to a multitude of activities and amenities as well as floor-to-ceiling windows with commanding views and spacious spa-style bathrooms.

Mandarin Oriental, Las Vegas will bring an internationally renowned luxury brand to Southern Nevada. With colors and textures that reflect its surroundings, this project, designed by Kohn Pedersen Fox Associates, will bring harmony and balance to CityCenter's energetic environment. Interiors of the hotel and 227 residences will be an artful blend of contemporary and Eastern design, incorporating a decadent selection of design elements that appeal to a discerning, well-traveled guest accustomed to the highest standards.

Rising 57 stories between Bellagio and CityCenter's resort casino, Vdara Condo Hotel will add the premium service and amenities of a luxury hotel to a luxury condo hotel project. With approximately 1,543 units, this sleek, ultra-modern onyx tower, designed by RV Architecture, LLC, led by Rafael Viñoly, will create a distinctive brand defined by hip living spaces and unparalleled service.

The development's towering 61-story, 4,000-room resort casino, designed by Pelli Clarke Pelli Architects, will take the Las Vegas skyline to new heights. Located adjacent to Vdara, the resort casino will provide a technologically advanced meeting and convention center and will house a Cirque du Soleil production based on the song catalog of Elvis Presley.

Baldwin believes CityCenter's success will rest on the quality of its design, which will stand out as a profound example of 21st century architecture. "That's what architecture does: it's beautiful, it's provocative and it invites people to come explore the interior spaces," he said.

The CityCenter Fine Art Program, one of the world's largest and most ambitious public collections, will encompass sculptures, paintings and large-scale installations that will engage visitors on both a visual and intellectual level. CityCenter will be MGM MIRAGE's greatest achievement to date. "I think the impact will be profound," said Baldwin. "When residents and guests experience all that CityCenter has to offer, they will be awed."

